

10th grade: Counselor Introduction

November 2021

Ms. Kampa (A-K)



- 23rd year at MWHS - all in the same office!
- I am at my happiest when I'm outside - especially running.
- Before I figured out I wanted to be a school counselor I was studying to be a dietitian.

Ms. Baumann (L-Z)

- Started at MWHS in 1999
- HUGE Ted Lasso Fan (who isn't?)
- If I weren't a school counselor, I would be a chef



Let's learn more about you....

- Check your email.
- We sent a link to a short form that you should complete right now.
- Please answer the questions completely and honestly.
- We will use the information to help us get to know you and to guide our large group and individual work with you this year.
- Thank you!



How can we help you?

Social/Emotional Support: Supporting you in your mental health, relational health, and personal growth.

Short term: Unexpected change in events, coping **Long Term:** Referring to other professional resources

Academic Support: Helping you choose and be successful in your courses.

Short term: Assisting with teacher communication or advocacy **Long term:** Developing a four year plan

Post-secondary Support: Helping you plan for your educational and career goals.

Short term: Assisting with a college visit or interest inventory **Long term:** Planning for life after high school

What are some important benchmarks this year?

- College Rep Visits: Ongoing throughout the year
 - Personality Inventory: 1st semester
 - Registration for 11th grade classes: January
 - Pre-ACT Test: 2nd semester
-

College Rep Visits

College Rep Visits are happening again!
(some in person and some virtual)

- College Rep Meeting Schedule on:
 - ◆ Schoology
 - ◆ Weekly Bulletin
 - ◆ Posted throughout the building
- If you are interested:
 - ◆ Get a pre-excused pass in guidance
- Great way to gather basic information in a low pressure environment.

Ways that we can connect:

- **Individual email:** Many of your questions might be able to be addressed by sending your counselor a simple email.
 - Ms. Kampa (A-K): kampat@westonka.k12.mn.us
 - Ms. Baumann (L-Z): baumanna@westonka.k12.mn.us
- **Emails/Schoology posts from counselors:** We do our best to send valuable information to all students at once.
 - If you see an email from us, take a quick peek to see if the information is helpful.
- **Meeting:** We are happy to set up a time to meet with you

Other ways to get important information:

- **Newsletter:** We do our best to include important/timely information in the MWHS Newsletter that is sent out on Thursdays (in the Guidance section).
- **Guidance Website:**
 - Top option under ACADEMICS on the high school website
 - Copies of each student/parent presentation
 - College rep visit calendar
 - Course information
 - Important forms

Naviance

- 10th grade is really a great time to reflect and explore who you are and how that might connect to a future career.
- Today, we're going to take a look at your personality type and how that might impact your future.

Log into Naviance via Clever



Welcome Screen

The screenshot shows the Naviance user interface. At the top left is the Naviance logo with the tagline 'BY POWERSCHOOL'. The navigation menu includes 'Home' (highlighted in blue), 'Self-Discovery', 'Careers', 'Colleges', and 'Planner'. On the right side of the navigation bar, there are icons for a heart, '10th Grade', a star, an envelope, a profile icon labeled 'DB', and 'About Me'. The main heading reads 'Welcome, Demo Baumann!'. Below this is a search bar with the placeholder text 'Search for Colleges' and a dropdown arrow, followed by a search input field with the placeholder 'Type a college name' and a 'SEARCH' button. The content area is divided into two columns. The left column is titled '10th Grade Fall' and has a language dropdown set to 'English' and a 'Go' button. The text in this section reads: 'Welcome Sophomores! As part of 10th grade advisory, we'll be using many components of Naviance. By the end of the year you will have completed your "Do What You Are" personality type. You will also set a goal related to those results and the Pre-ACT test results. There are many helpful resources through Naviance, so feel free to dive in and explore! Let your counselor know if you have questions.' A 'Read more' button is located at the bottom of this section. The right column is titled 'My Favorites' and contains three items: 1) A heart icon, 'COLLEGES', and 'I'm thinking about'. 2) A graduation cap icon, 'COLLEGES', and 'I'm applying to'. 3) A heart icon, 'CAREERS AND CLUSTERS', and 'I'm thinking about'.

NAVIANCE
BY POWERSCHOOL

Home Self-Discovery Careers Colleges Planner

10th Grade

DB About Me

Welcome, Demo Baumann!

Search for Colleges

Type a college name

SEARCH

10th Grade Fall

English Go

Welcome Sophomores!

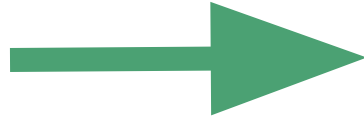
As part of 10th grade advisory, we'll be using many components of Naviance. By the end of the year you will have completed your "Do What You Are" personality type. You will also set a goal related to those results and the Pre-ACT test results. There are many helpful resources through Naviance, so feel free to dive in and explore! Let your counselor know if you have questions.

[Read more](#)

My Favorites

- COLLEGES
[I'm thinking about](#)
- COLLEGES
[I'm applying to](#)
- CAREERS AND CLUSTERS
[I'm thinking about](#)

Click on Self Discovery



Personality

[← Back to Self-Discovery](#)



AchieveWorks Personality®

LAST UPDATED Nov 9th 2021

RETAKE

CONTINUE

AchieveWorks Personality® helps you identify your personality type by asking you to choose scenarios that best represent how you behave in real life.

This tool will reveal your true personality and provide tips to achieve success, in a way that works for you.

0%

In Progress

Complete Assessment: approximately 15 minutes

- Answer questions to the best of your ability
- Rate the Career “Clusters”
- Rate the accuracy



The screenshot shows the AchieveWorks Personality assessment interface. At the top, there is a blue header with the text "AchieveWorks Personality®" and a logo featuring a yellow and red circle and a green arrow. Below the header, there is a progress bar labeled "PROGRESS" on the left and "0%" on the right. The text "Question 1/36" is displayed in the bottom right corner. The main content area contains the instruction "Choose the scenario that best fits you." followed by a reminder: "Remember, don't be influenced by how you might aspire to act or what others might expect of you." Below this, there are two radio button options for selection.

AchieveWorks Personality®

PROGRESS 0%

Question 1/36

Choose the scenario that best fits you.

Remember, don't be influenced by how you might aspire to act or what others might expect of you.

- I have a lot of friends I like to spend time with, and usually enjoy meeting new people. I am in constant contact with friends and often try to get them together to have fun and go places. Just thinking about getting something going gets me excited and motivated.
- I am a somewhat private person. I have very close friends I've known for years. I like to do things with them, but I also enjoy spending time alone – doing things I like to do or just relaxing. In social situations, especially new ones, I often prefer to listen and observe awhile before getting involved.

When you are done...read the summary



Summary

What's Next



Take a look at your personality. These will help you unpack why you think and react to events and activities in certain ways.



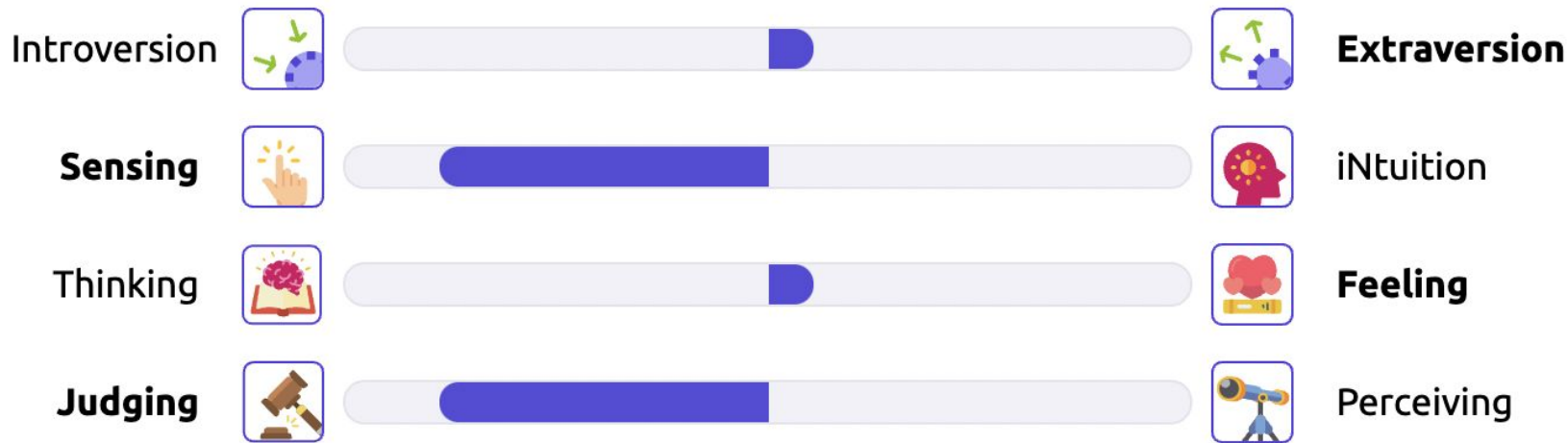
Read your full report. Your full report includes recommendations for your specific personality. It also breaks down strengths and challenges unique to your personality. By understanding your personality, you can better develop your strengths and create environments that work for you.



Talk things over with your parent/guardians, teachers, or counselor. They can help you come up with new ways to use what you've learned about yourself to help you succeed in school and life.

Take a look at your personality type

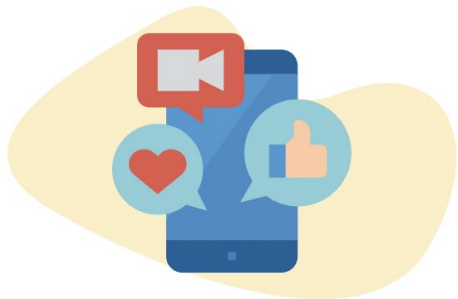
Your personality type is ESFJ



Review how your personality type impacts:

- Learning
- Working/productivity
- Communication
- Working with others

Review Recommended Careers: Click to learn more



Meeting, Convention, and Event Pl...

Coordinate activities of staff, convention personnel, or clients to make arrangements for group meetings, events, or conventions.



Education

4 Year College



Median Salary

\$48,290

 FAVORITE



Nursery Workers

Work in nursery facilities or at customer location planting, cultivating, harvesting, and transplanting trees, shrubs, or plants.



Education

High School Diploma



Median Salary

\$23,380

 FAVORITE